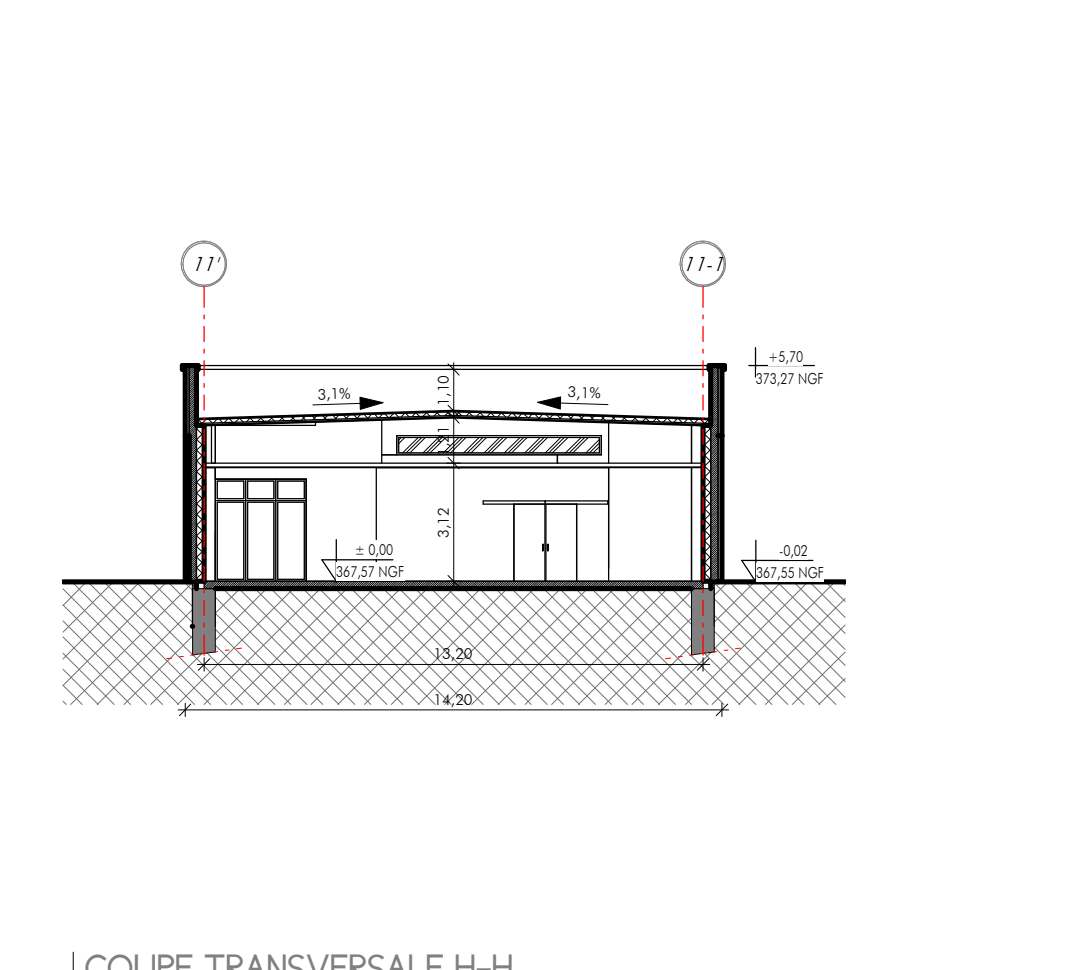
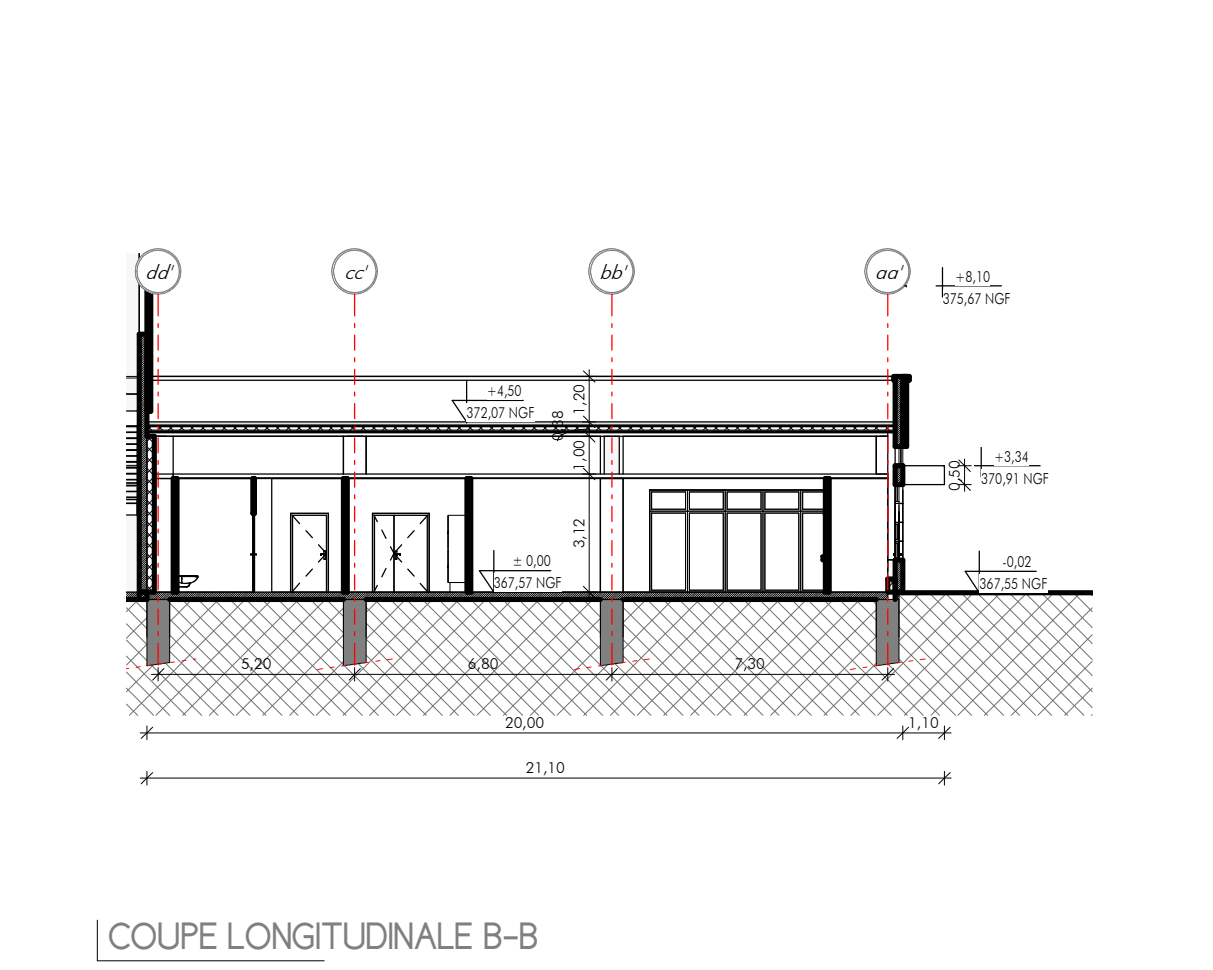
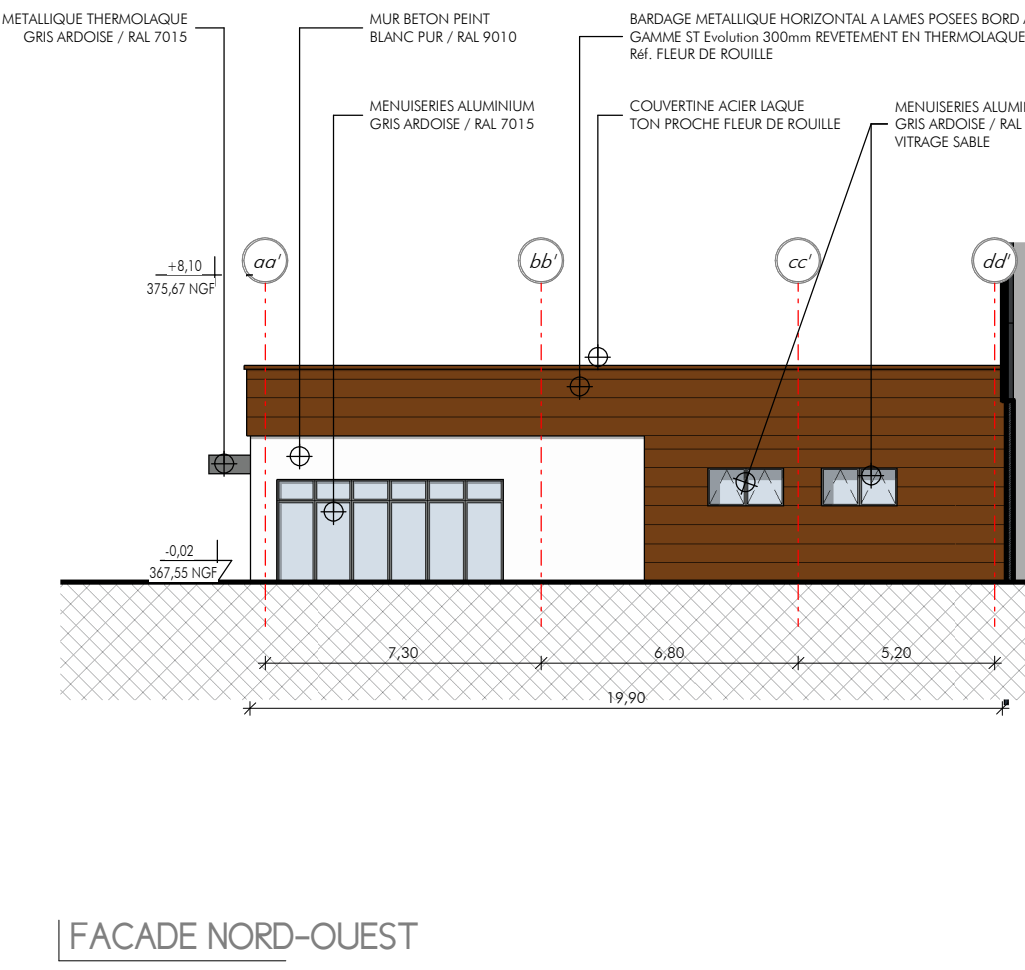
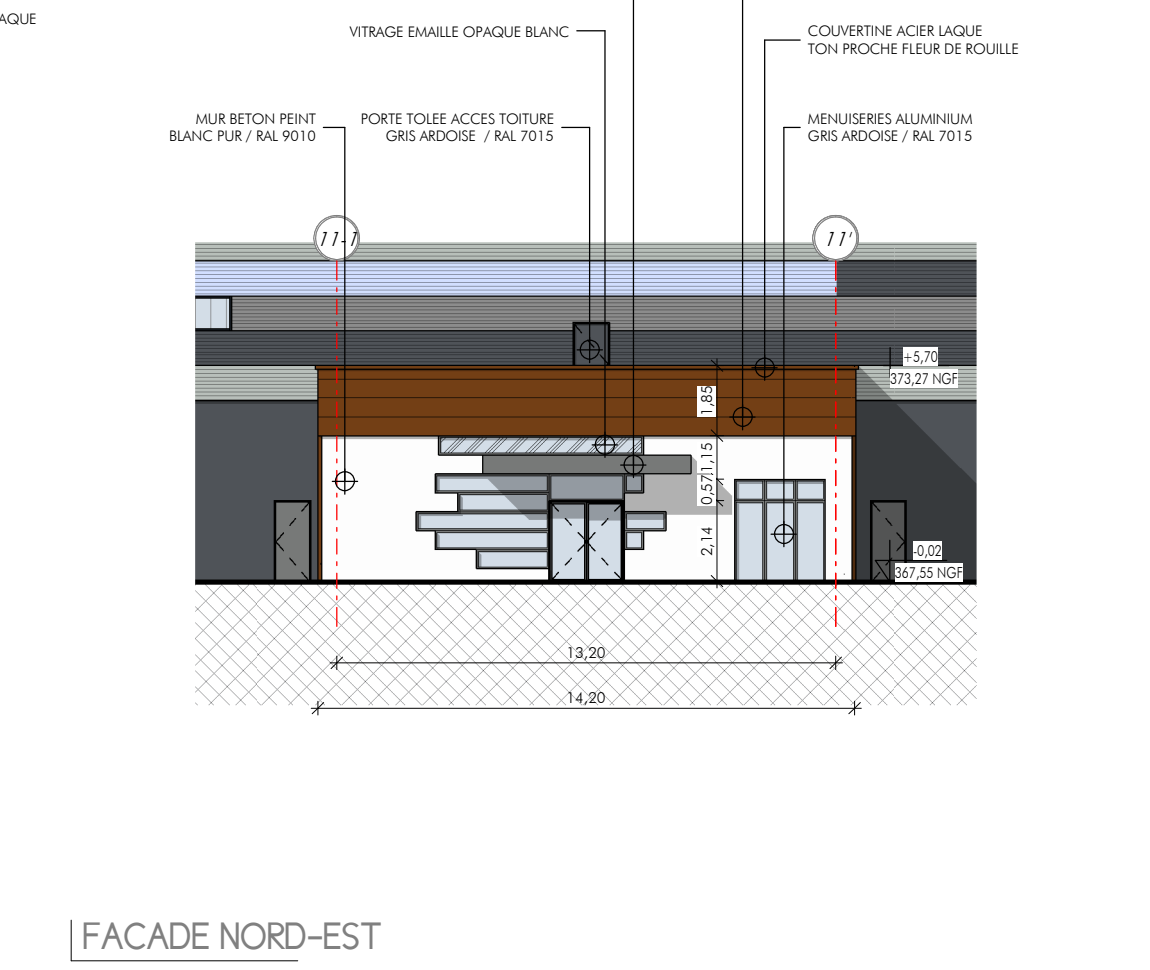
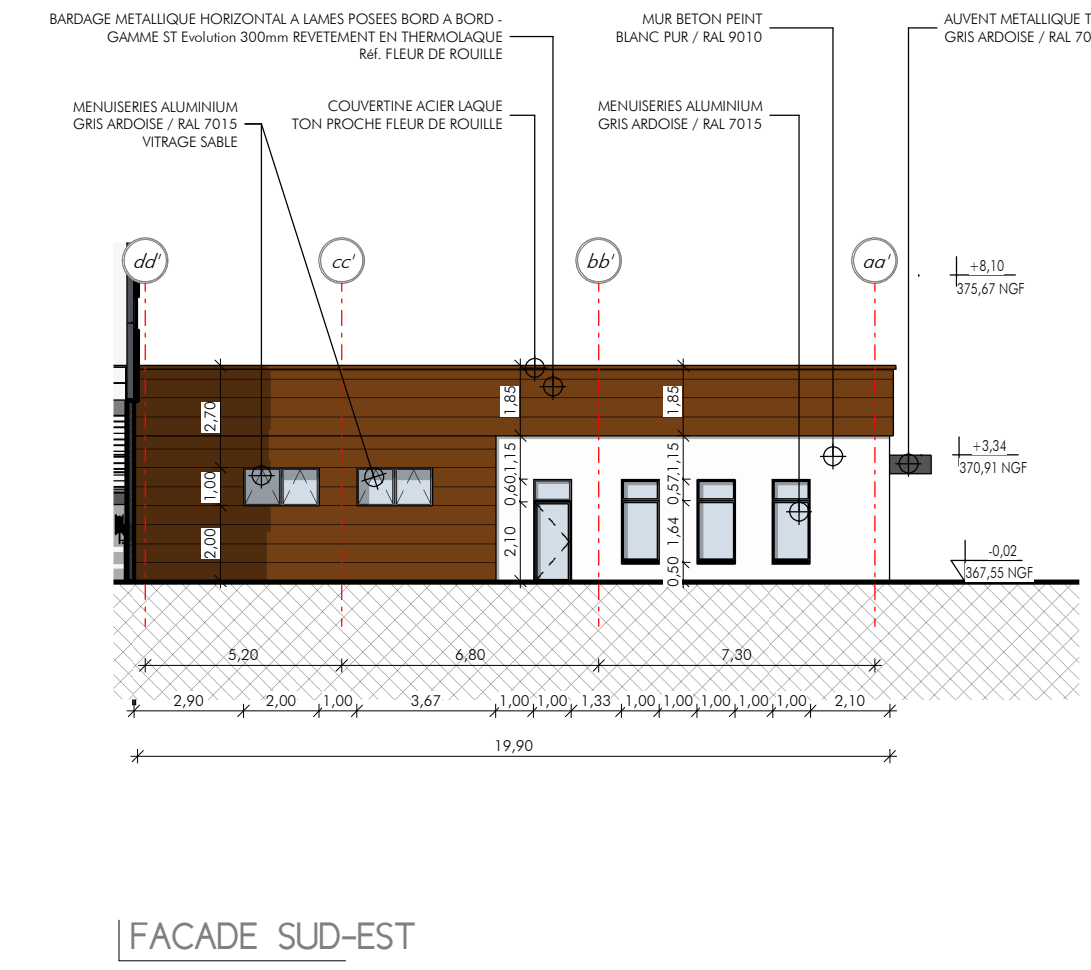
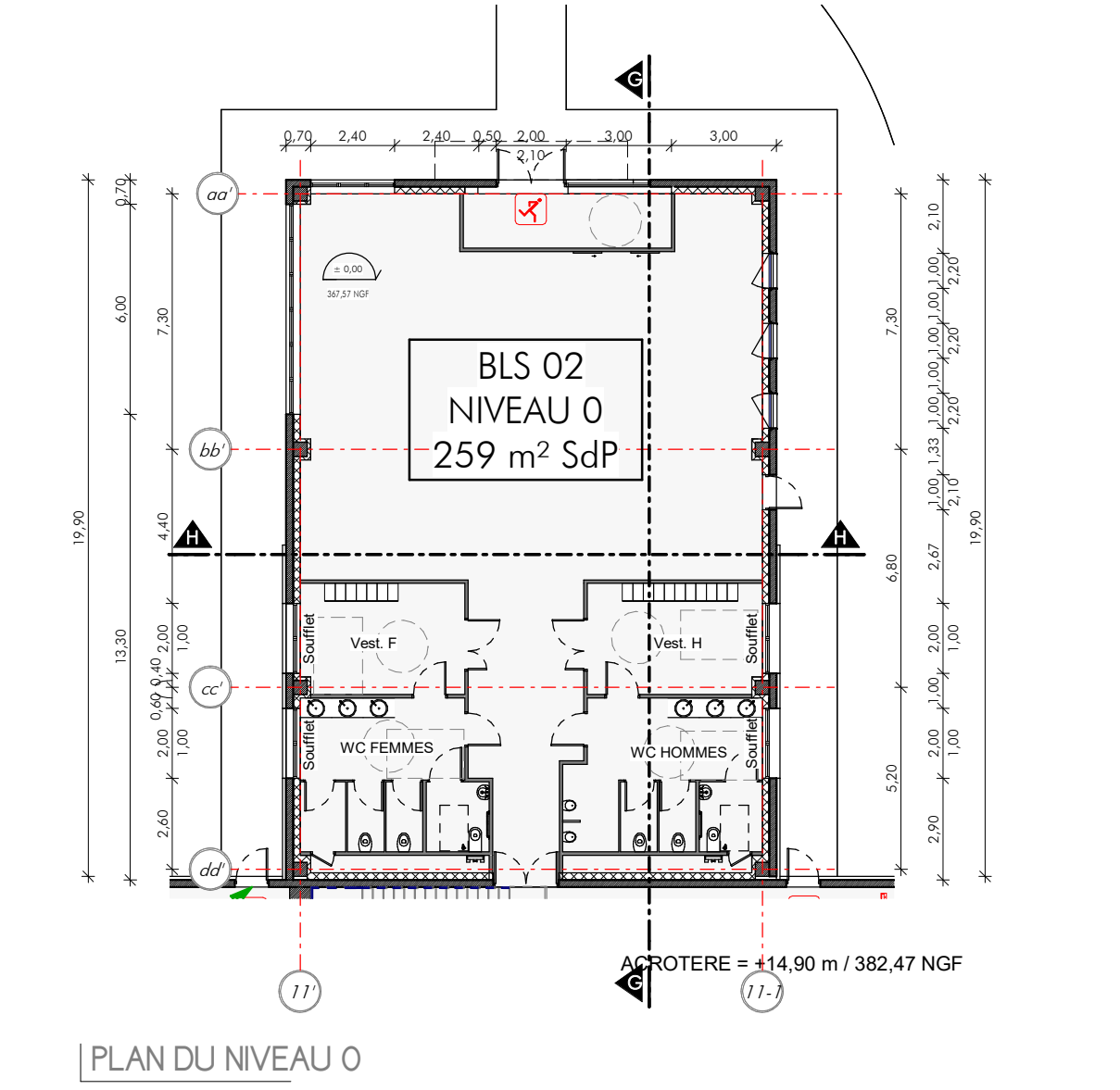
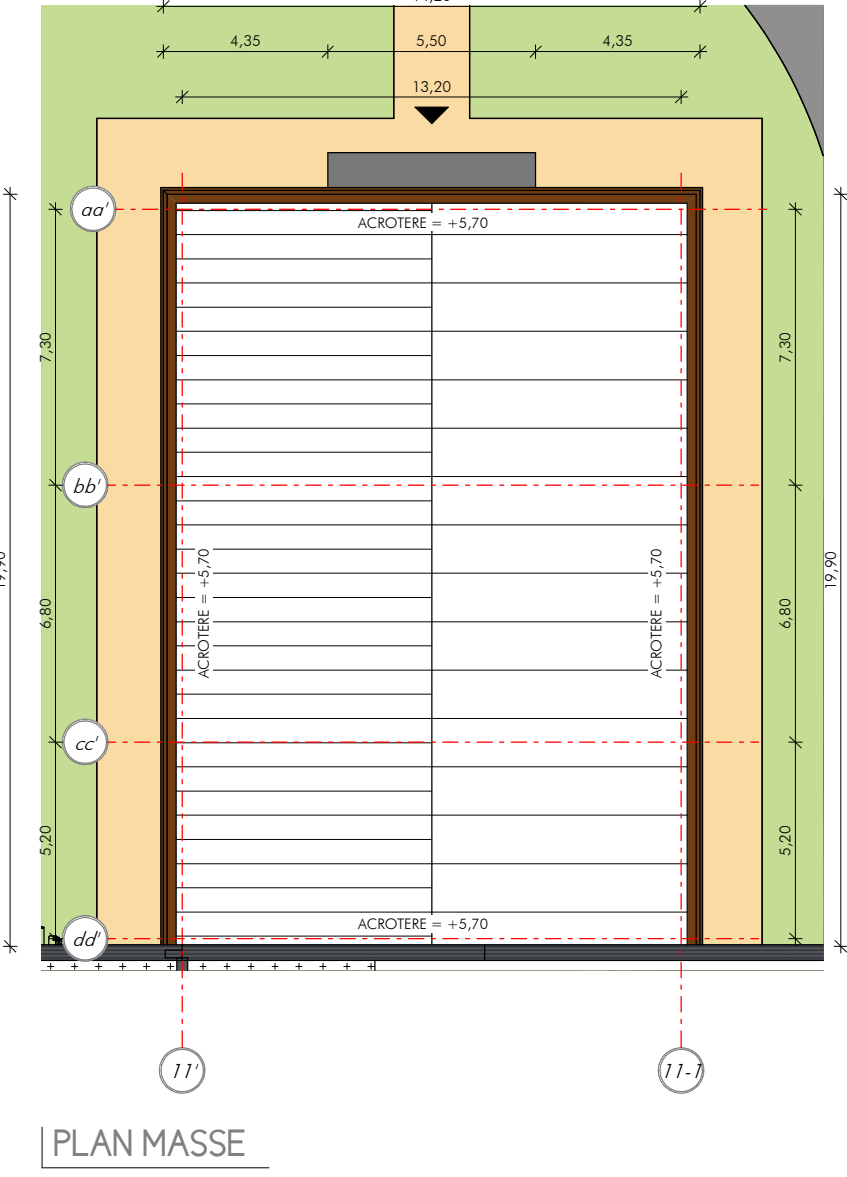


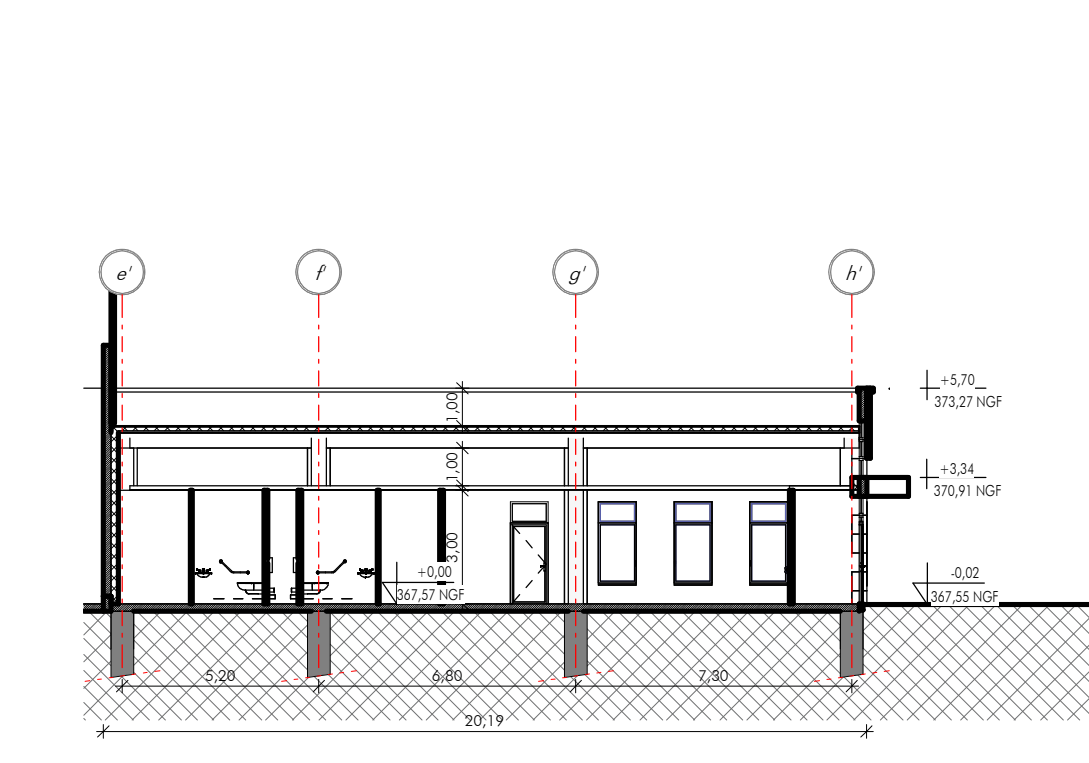
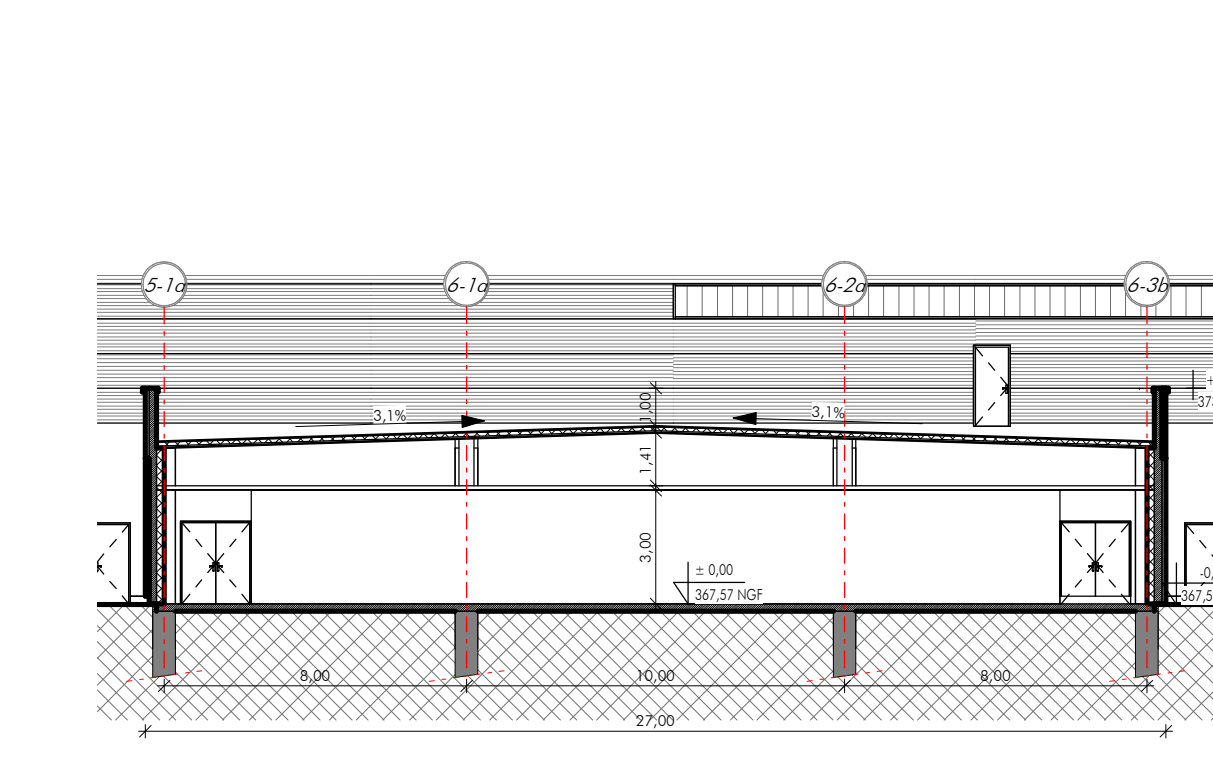
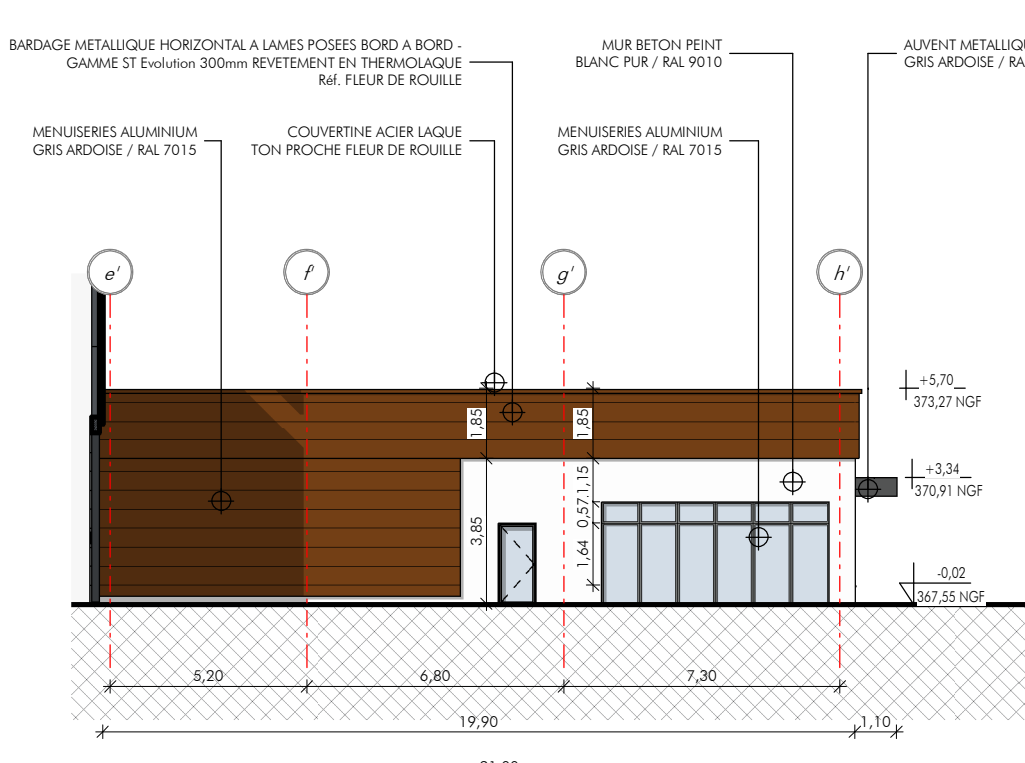
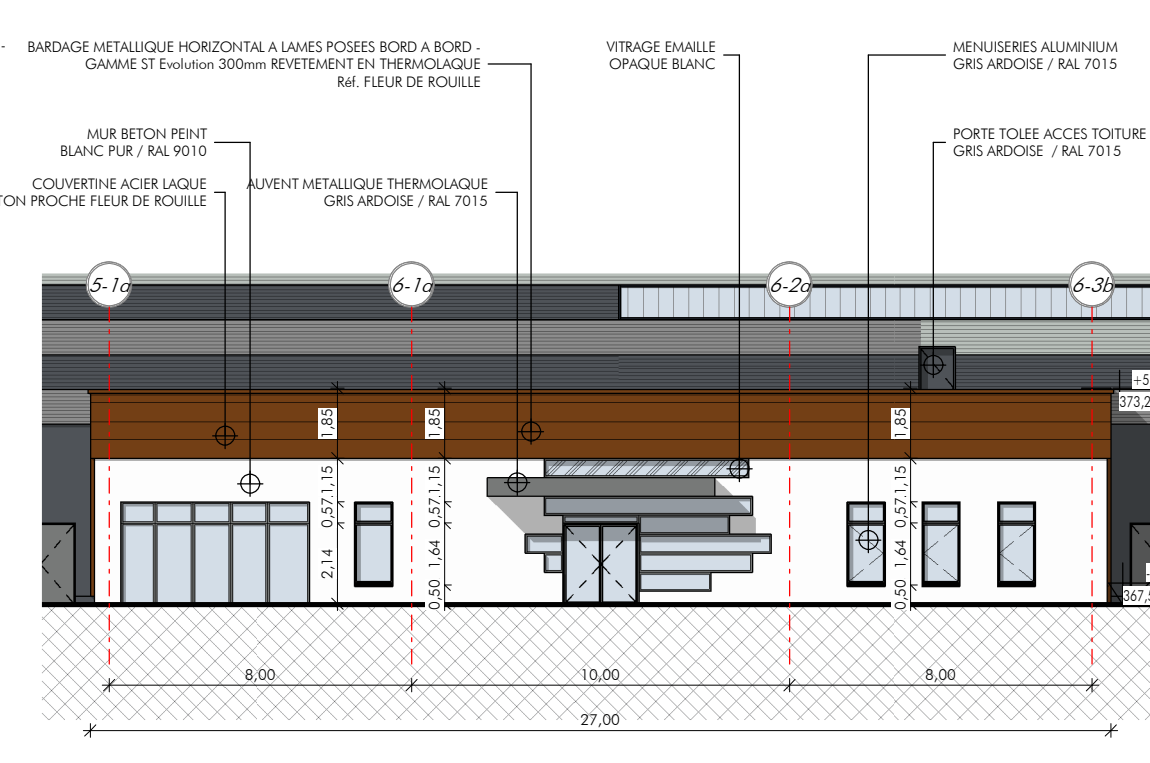
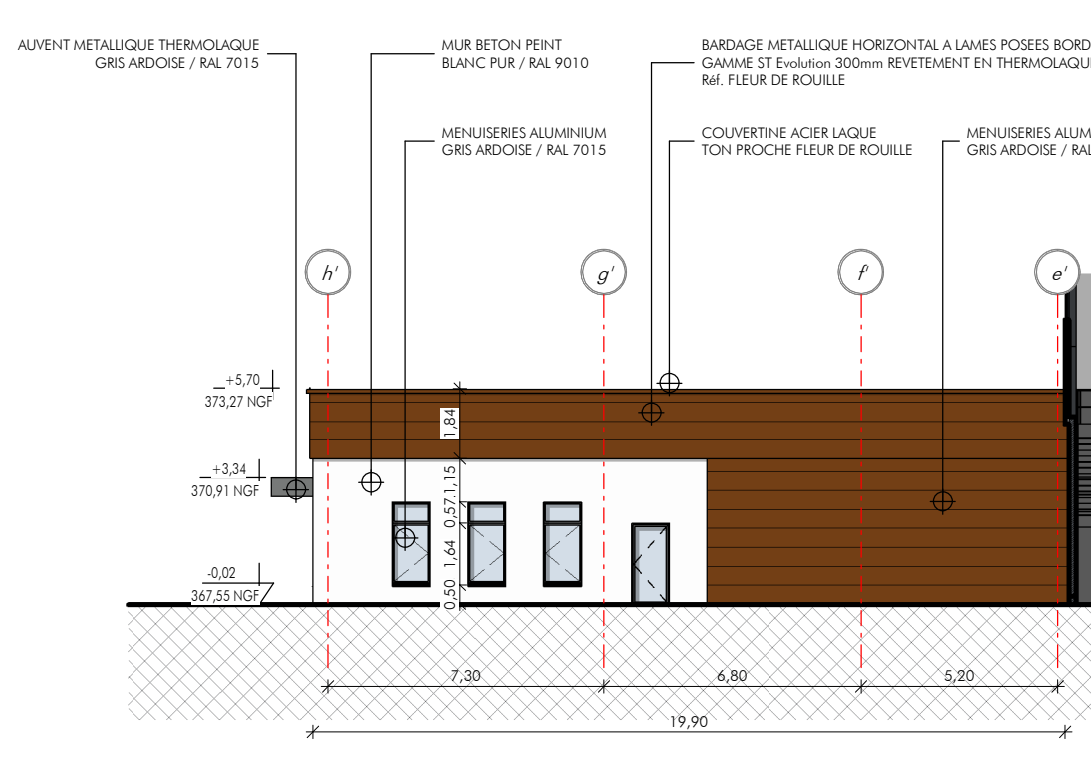
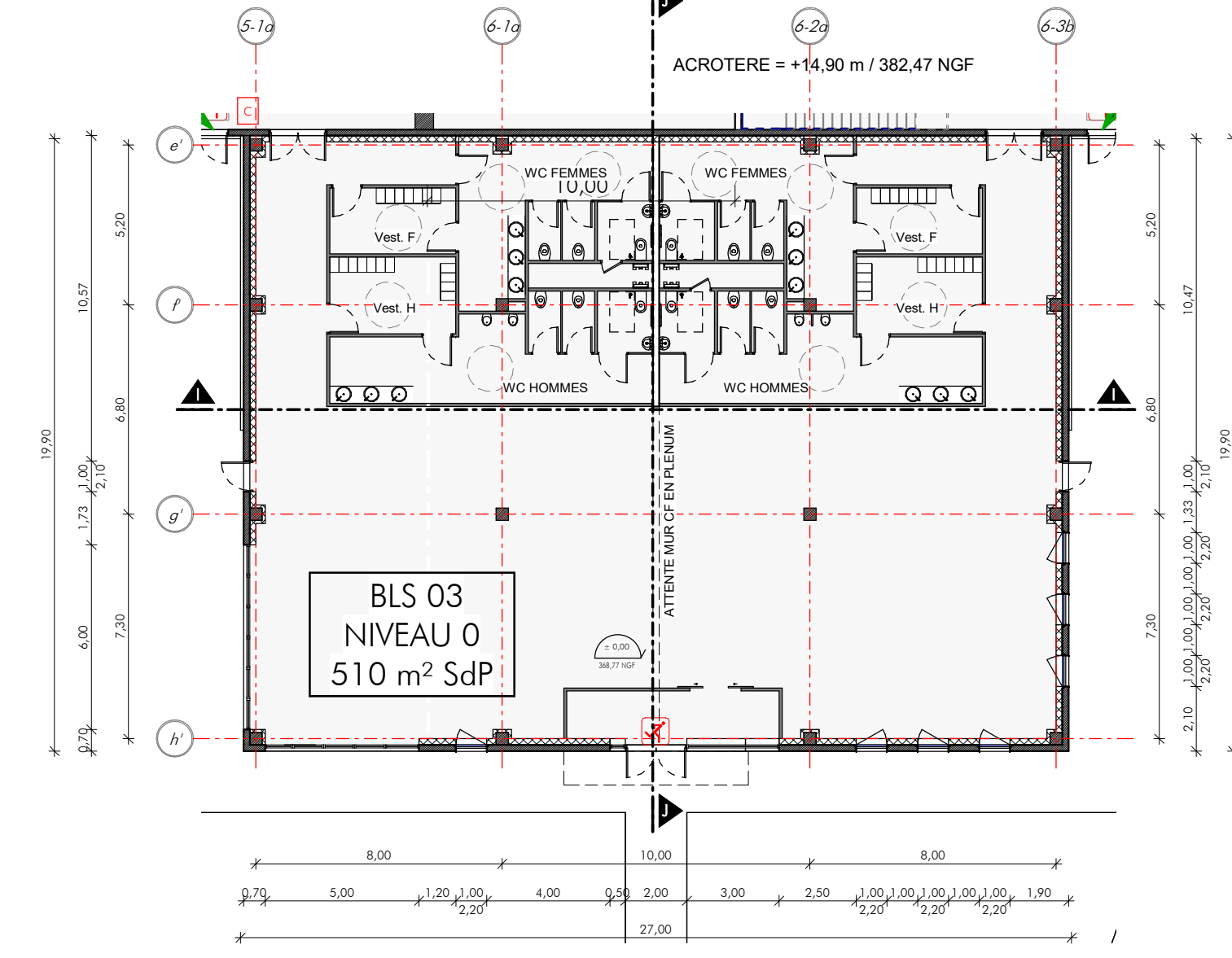
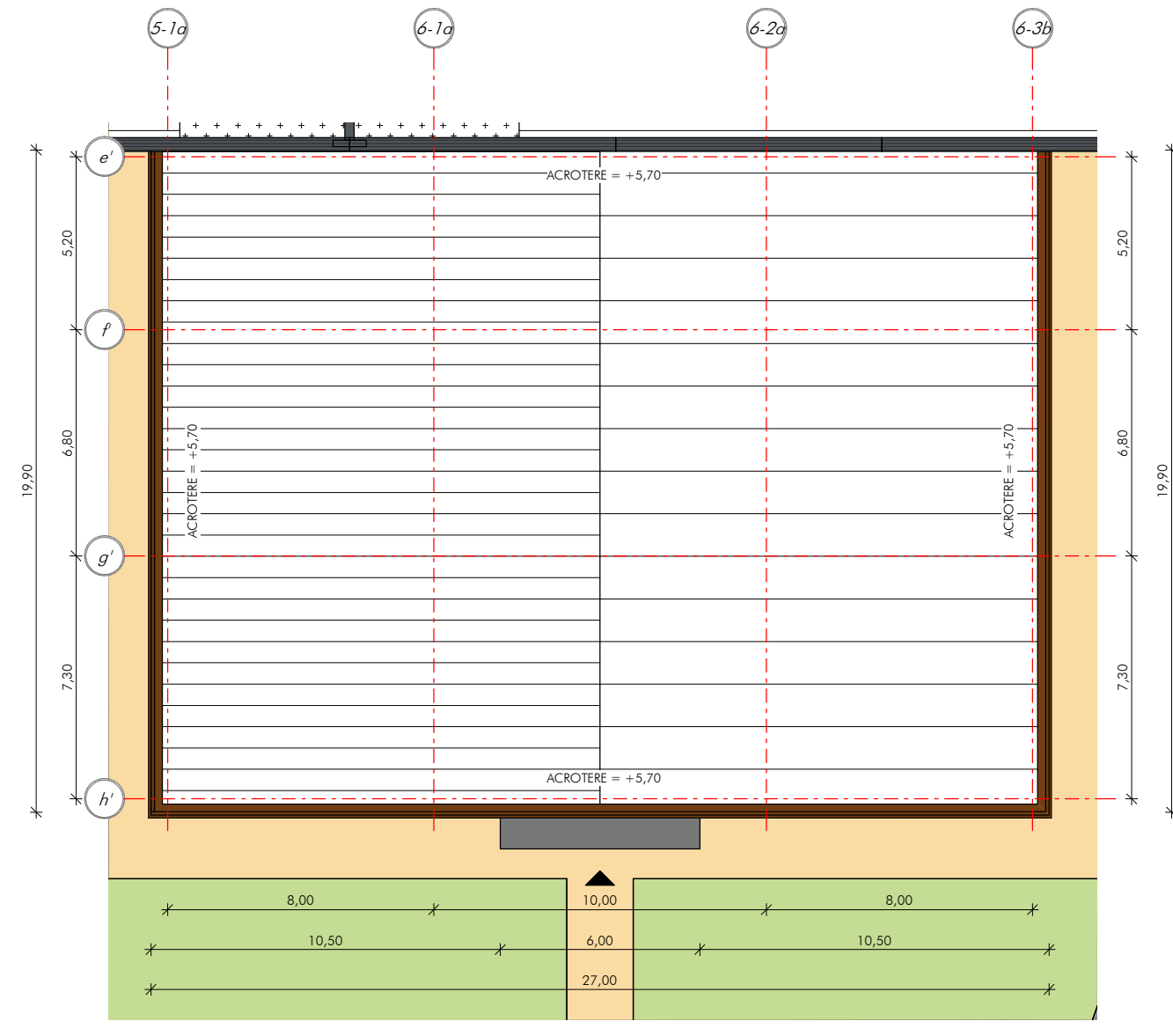
BUREAU ET LOCAUX SOCIAUX 01

BUREAU ET LOCAUX SOCIAUX 02



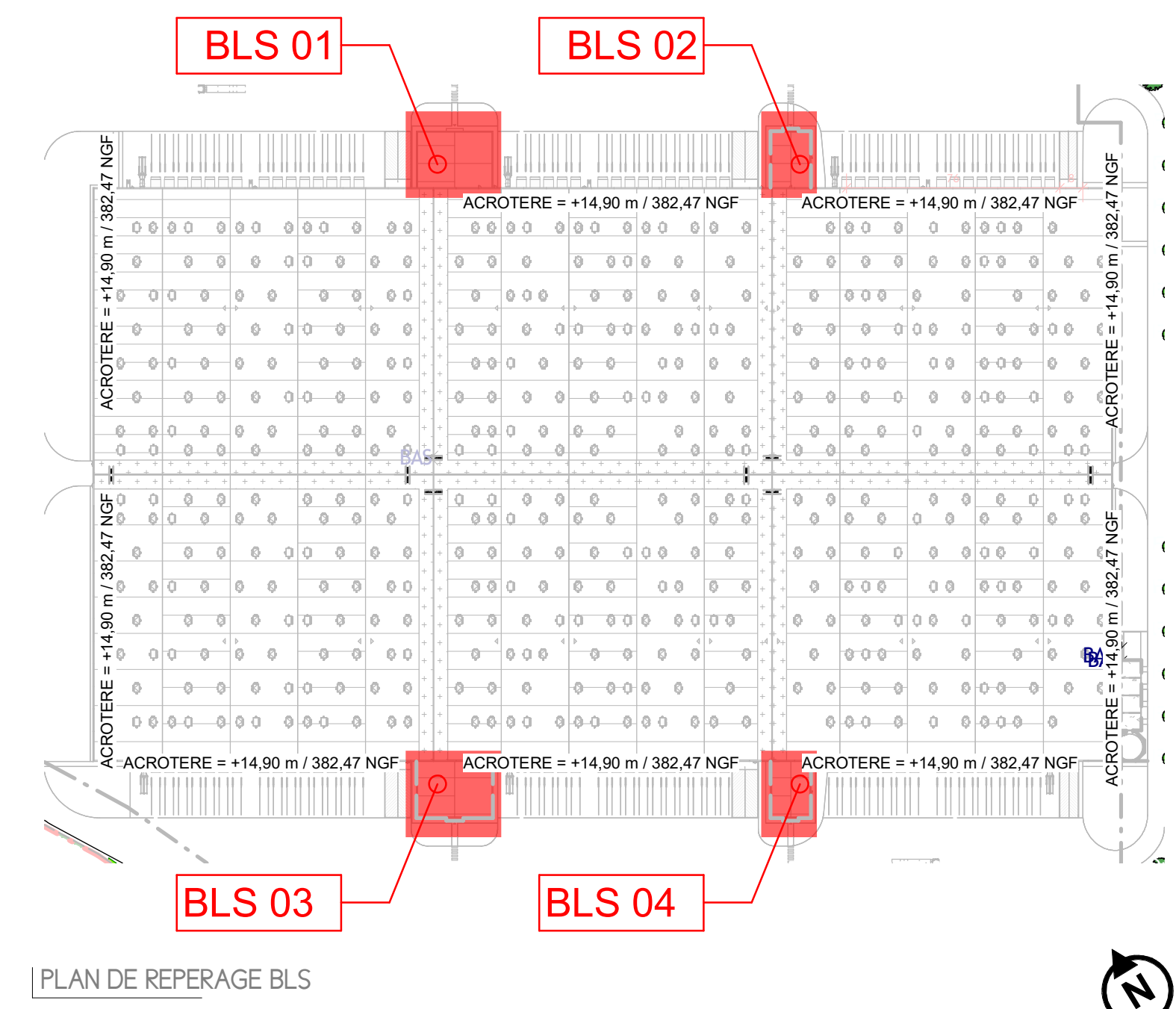
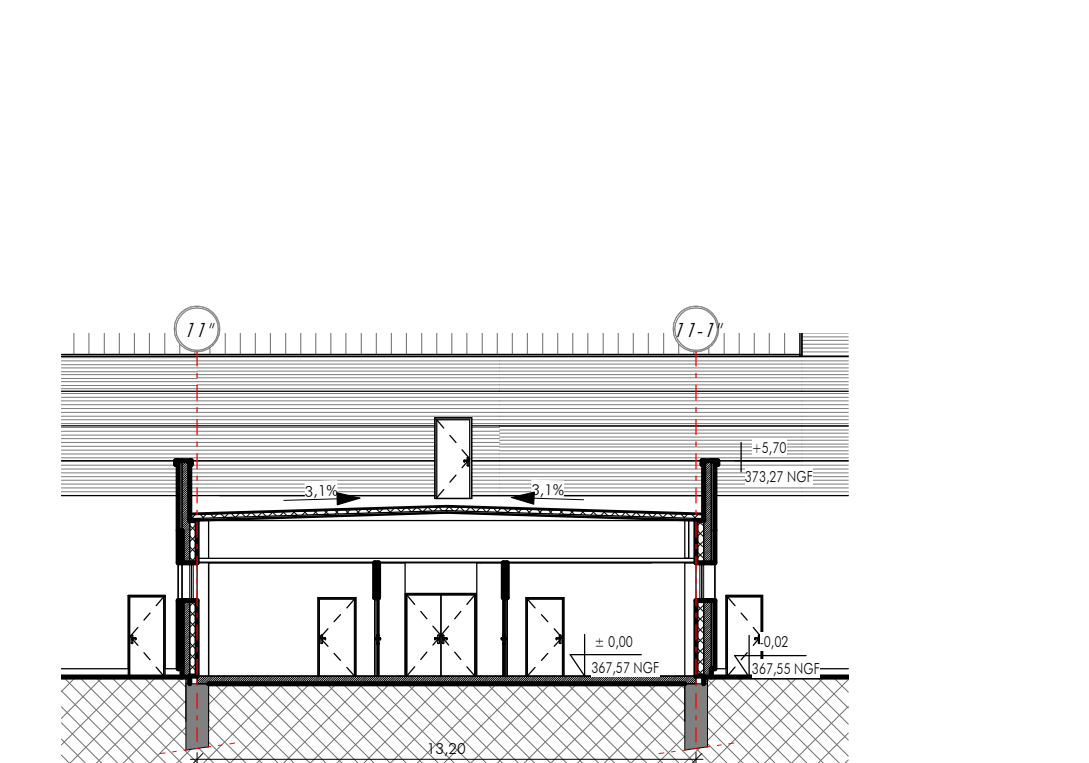
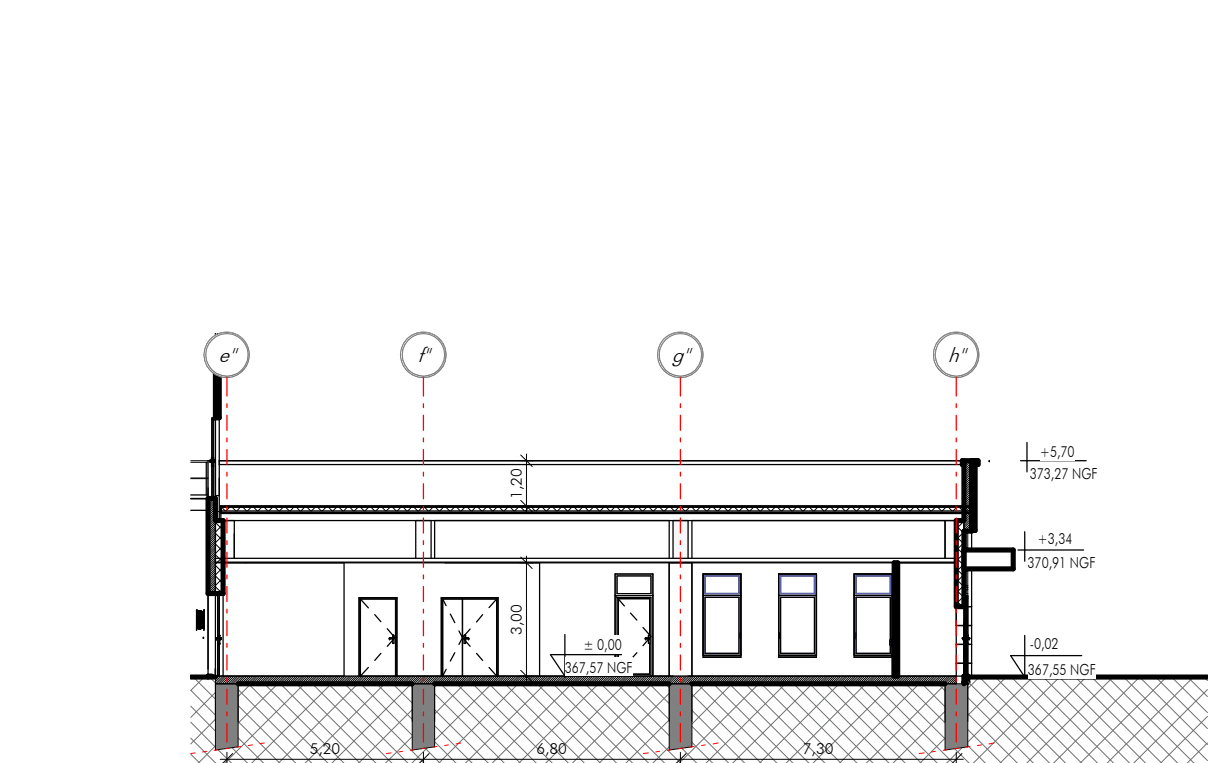
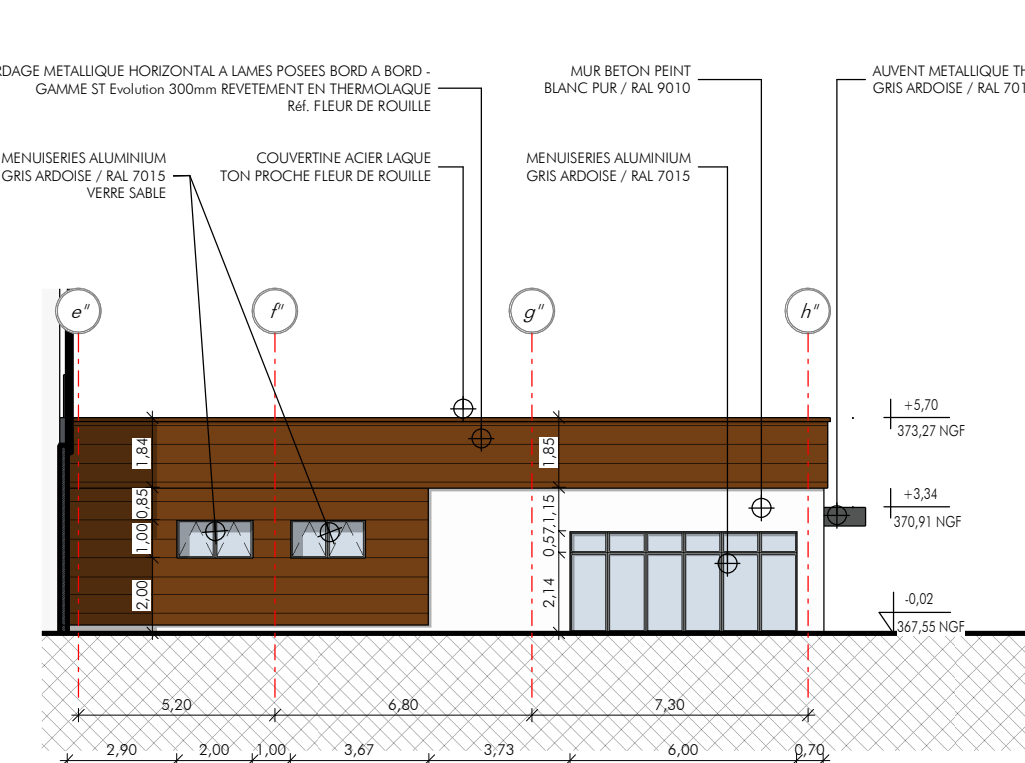
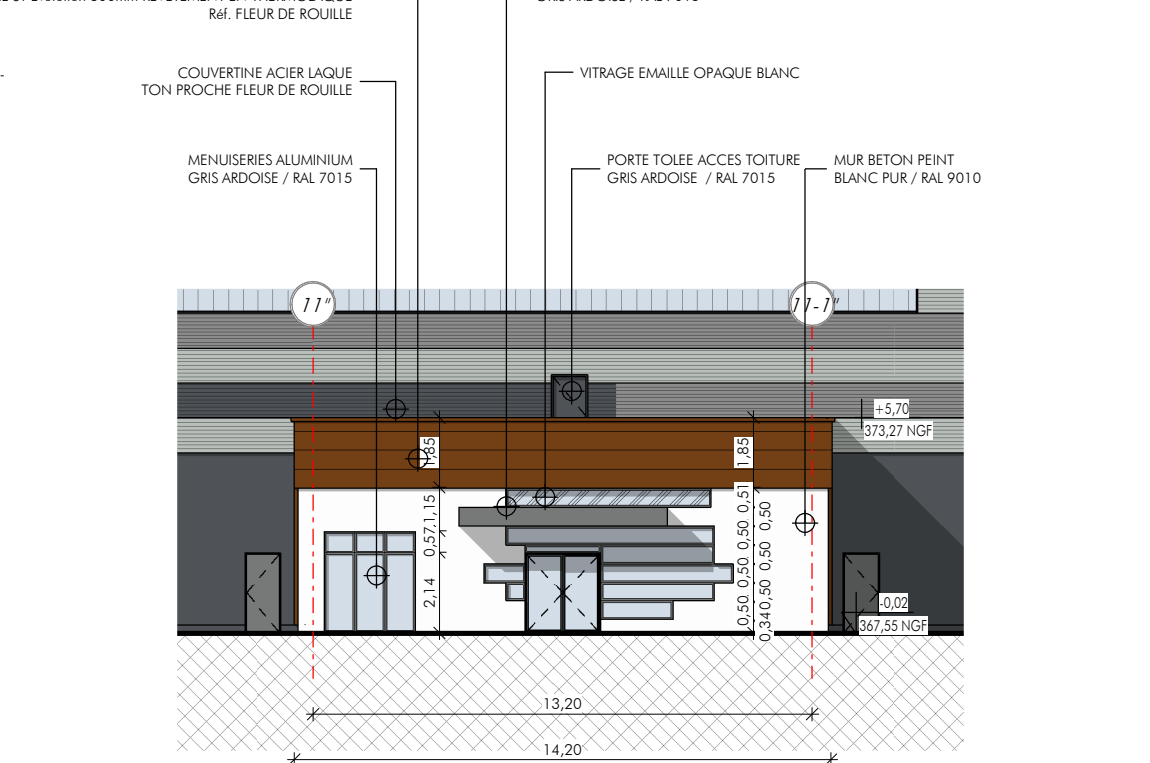
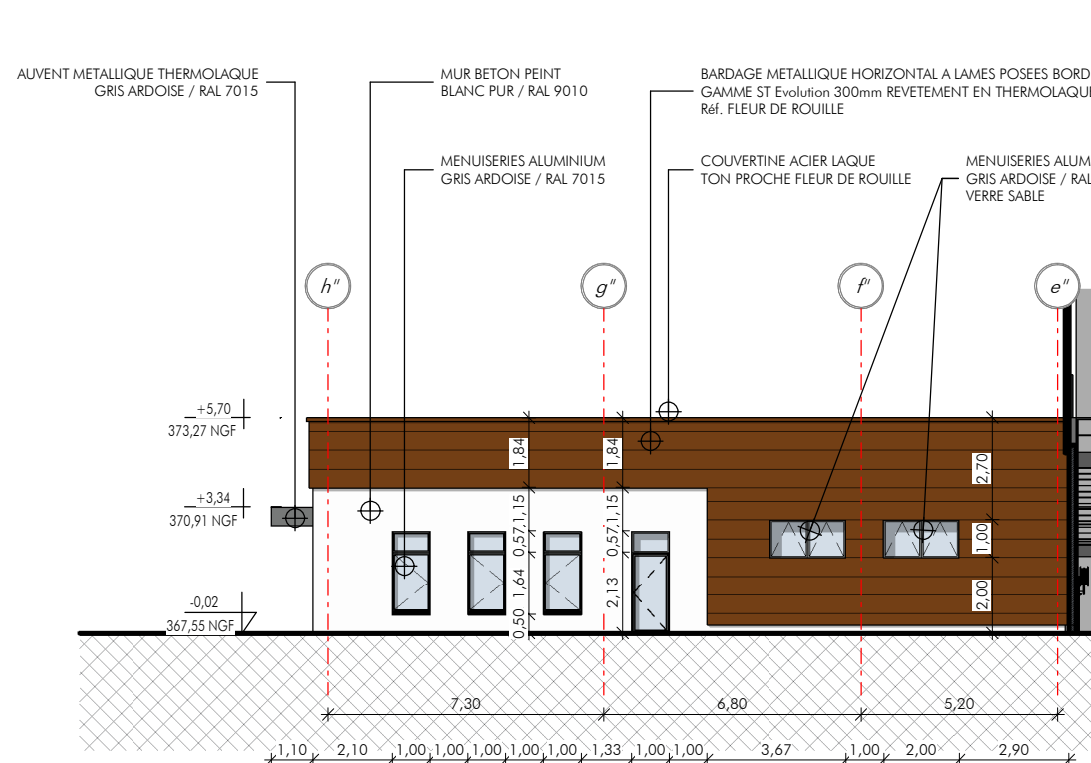
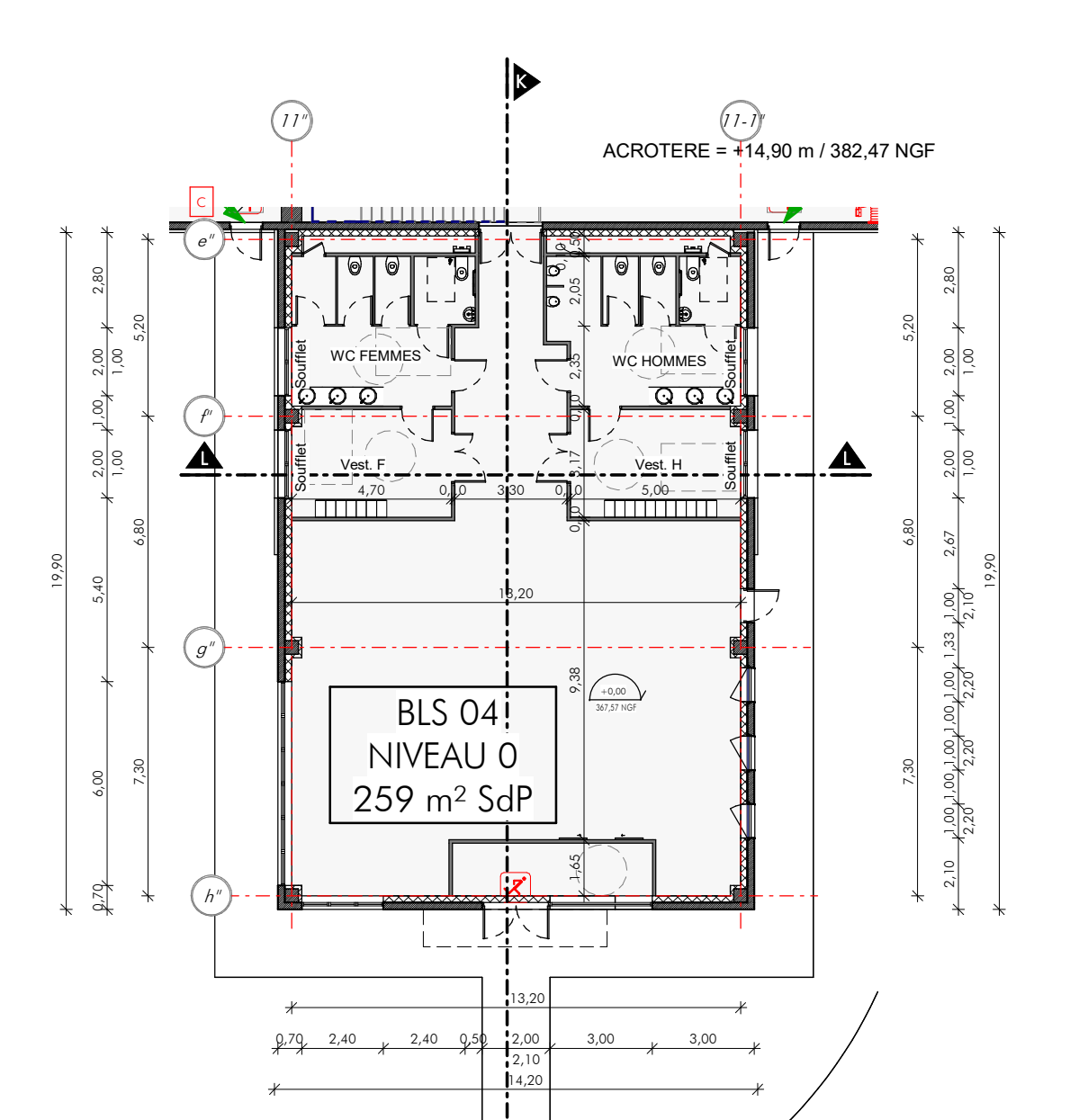
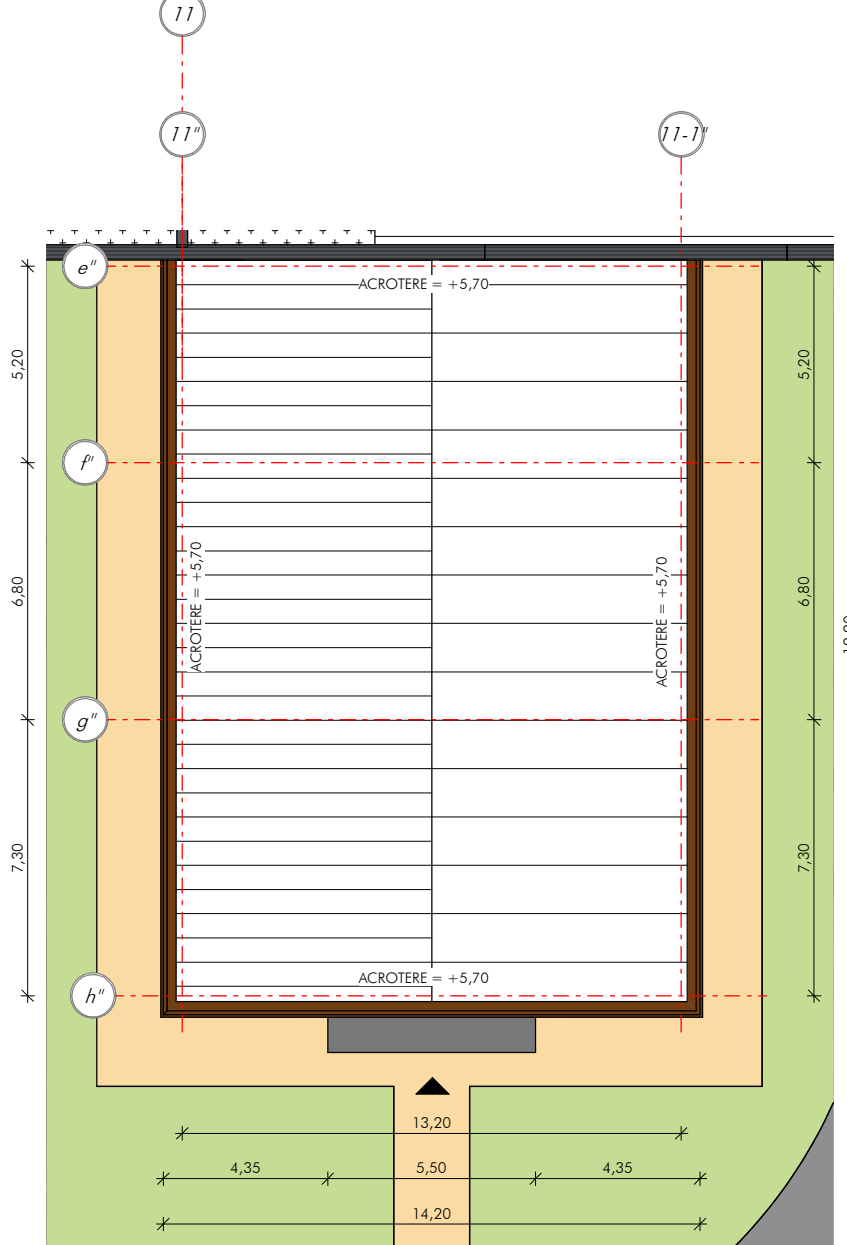
BUREAU ET LOCAUX SOCIAUX 02

BUREAU ET LOCAUX SOCIAUX 03



BUREAU ET LOCAUX SOCIAUX 03

BUREAU ET LOCAUX SOCIAUX 04



BUREAUX ET LOCAUX SOCIAUX

06
 0281 / 2008ms
 CAO : JS
 0281-VII-GENERAL-CENTRAL

SELP VALOG FONTAINE
 Projet BELFORT DCT
 CONSTRUCTION D'UNE PLATE-FORME LOGISTIQUE
 ZI DE L'AEROPARC - RUE ADOLPHE PEGOUD - RD 60
 50350 FONTAINE

DEMANDER : SELP VALOG FONTAINE
 20, Rue Brunel
 75013 PARIS
 +33 (0)1 56 69 31 53
 info.valog@valog.com

ASSISTANT MAITRE D'OUVRAGE : Etyo
 11, avenue Descazes
 92820 LARMOR-PLAGE / FRANCE
 +33 (0)1 74 27 28 00
 contact@etyo.com

ARCHITECTE : ARCHI-FACTORY
 8 ARL architecture ARCHI-FACTORY
 Equipe du Ter
 13 Boulevard Jean Monnet
 92820 LARMOR-PLAGE
 +33 (0)1 97 24 08 00
 Contact@archi-factory.eu

DEMANDE DE PERMIS DE CONSTRUIRE
 27 JUN 2022